

BLEND  
FEDERICO PERI



**Struttura:** struttura in multistrato di betulla e MDF rivestita in pelle. Vano a giorno realizzato in materiale a scelta. Interno in rovere spazzolato tinto in diverse tonalità.

**Decoro:** dettagli e maniglia in materiale a scelta.

Cassa in legno dotata di due sensori per verifica di eventuali danni durante il trasporto.  
(Fare riferimento a "Avvertenze importanti").

**Frame:** frame in birch plywood and MDF leather-covered. Open compartment in material by choice. Interior in brushed oak stained in different tone.

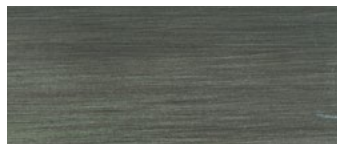
**Decoration:** details and handle in material by choice.

Wooden crate equipped with two sensors to check for any damage during transport.  
(Refer to "Important information").

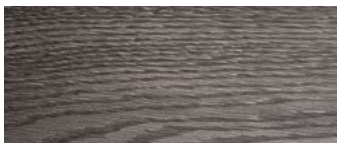
## FINITURE DISPONIBILI/AVAILABLE FINISHES



acciaio lucido  
glossy steel



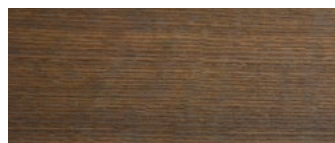
metallo brunito spazzolato a mano  
hand-finished burnished metal



rovere spazzolato Charcoal  
Charcoal brushed oak



rovere spazzolato Liquorice  
Liquorice brushed oak



rovere spazzolato Tobacco  
Tobacco brushed oak

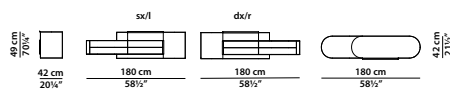
180 x 42 h49 cm – 70¼ x 16½ h19"

Mobile sospeso dx/sx.

Modello che necessita di montaggio.

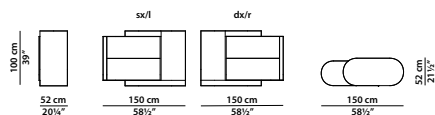
R/l hanging cabinet.

Article with assembly required.



150 x 52 h100 cm – 58½ x 20¼ h39"

Mobile dx/sx. R/l cabinet.



150 x 52 h180 cm – 58½ x 20¼ h19"

Mobile dx/sx. R/l cabinet.

