





DUNE  
DRAGA & AUREL



**Struttura:** struttura in vetroresina o in lamiera di acciaio Inox con lato esterno lucido e lato interno satinato.

**Decoro:** dettagli in ottone satinato o metallo cromato (solo per la versione in vetroresina).

Gabbia in legno dotata di due sensori per verifica di eventuali danni durante il trasporto.  
(Fare riferimento a "Avvertenze importanti").

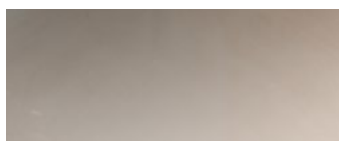
---

**Frame:** frame in fiberglass or in stainless steel sheet with polished external side and satin internal side.

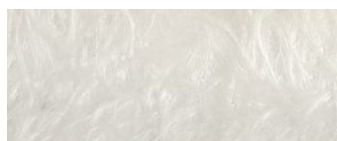
**Decoration:** satin brass or chromium-plated metal detail (for version in fiberglass only).

Wooden cage equipped with two sensors to check for any damage during transport.  
(Refer to "Important information").

#### FINITURE DISPONIBILI/AVAILABLE FINISHES



acciaio lucido  
glossy steel

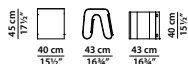


vetroresina naturale  
natural fiberglass

---

43 x 40 h45 cm - 16<sup>3</sup>/<sub>4</sub> x 15<sup>1</sup>/<sub>2</sub> h17<sup>1</sup>/<sub>2</sub>"

Tavolino. Small table.



---

120 x 105 h35 cm - 46<sup>3</sup>/<sub>4</sub> x 41 h13<sup>3</sup>/<sub>4</sub>"

Tavolino. Small table.

