



Modello: modello che necessita di montaggio.

Struttura: ripiani in acero. Antine in vetro fumé extra chiaro con dettagli in materiale a scelta. Spalle e divisori in MDF e laminato rivestiti in pelle e in specchio.

Piedi: piedini regolabili.

Cassa in legno dotata di due sensori per verifica di eventuali danni durante il trasporto.

(Fare riferimento a "Avvertenze importanti").

Model: article with assembly required.

Frame: shelves in maple. Shutters in smoked extra-light colour glass with details in material by choice. Side parts and dividers in MDF and laminate covered in leather and mirror.

Feet: adjustable feet.

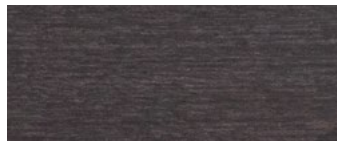
Wooden crate equipped with two sensors to check for any damage during transport.

(Refer to "Important information").

FINITURE DISPONIBILI/AVAILABLE FINISHES



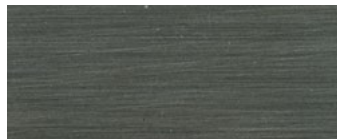
acero miele
honey maple



acero tinto con anilina nera
black aniline dyed maple



ottone satinato
satin brass



ottone brunito
burnished brass

147 x 57 h167 cm - 57¼ x 22¼ h65¼"

Mobile bar. Bar cabinet.

