

PILLOW

HANNES PEER



Struttura: struttura in metallo con finitura a scelta. Struttura seduta e schienale in multistrato di pioppo.

Imbottitura: imbottitura in poliuretano espanso a densità differenziata con rivestimento in fibra acrilica.

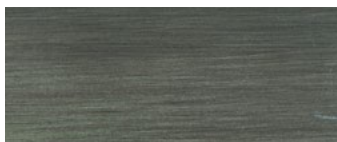
Disponibile solo in pelli morbide.

Frame: frame in metal with finish by choice. Seat and backrest frame in poplar plywood.

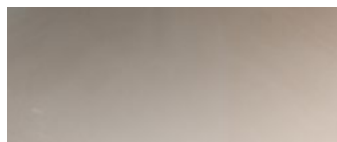
Filling: differentiated density polyurethane foam filling with acrylic fibre cover.

Available in soft leathers only.

FINITURE DISPONIBILI/AVAILABLE FINISHES



metallo brunito spazzolato a mano
hand-finished burnished metal



metallo cromato lucido
glossy chromed metal

120 x 93 h88 cm - 46³/₄ x 36¹/₄ h34¹/₄"

Poltrona. Armchair.

